



Zbraslav family terraced houses

Data and facts

Company

PORR a.s.

Type

Residential construction

Runtime

08.2011 - 07.2012

Principal

DOB Invest a.s.

[Project report online](#)

www.porr-group.com



Family terraced houses in a peaceful environment.

On the western edge of the site, facing the main road, a 4m high sound insulation wall was constructed from steel beams with 1m high pre-fabricated exposed concrete filled panels. The upper part of the sound insulation wall consists of Plexiglass sheets.

Impressions

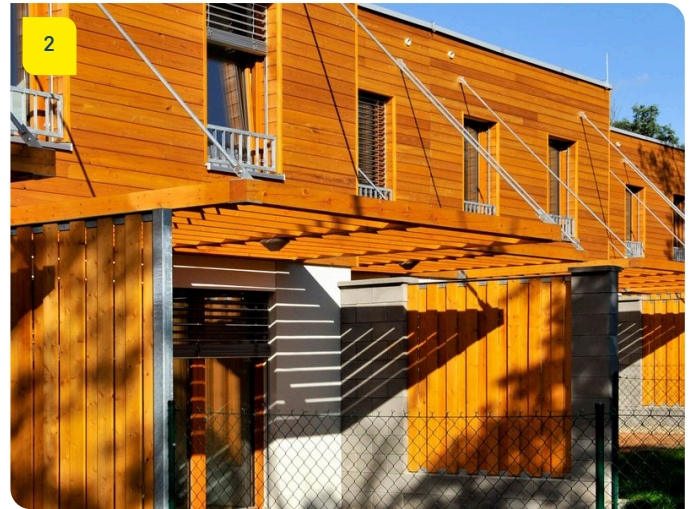


Image notes

1

Living close to nature on the edge of the city.

These terraced houses offer families a high quality of life in an attractive environment.

3

Living on the edge of the city.

These comfortable houses each have their own garage.

2

Living close to transport.

The façade is clad with larch wood planks.

Do you have questions about the project or would you like to learn more? Feel free to contact us for further information.

PORR AG Group Communications

Absberggasse 47

1100 Wien

T +43 50 626-0

E-Mail: comms@porr-group.com